

# **PHYTASE**

## **PRODUCT INSTRUCTIONS**

**SKU: 700004328**  
**K-PHYTASE**

05/25

**NOTE: PLEASE READ THIS BOOKLET CAREFULLY AS  
CHANGES TO THE PROTOCOL HAVE OCCURED**

(100 Assays per Kit)



© 2025, Neogen Corporation; © 2025, Megazyme. All rights reserved.

Neogen is a registered trademark of Neogen Corporation. Megazyme is a registered trademark of Megazyme Ltd.

All other trademarks are property of their respective owner.

## INTRODUCTION:

Phytases are a class of phosphatase enzymes which catalyse the sequential hydrolysis of phytic acid (InsP6, *myo*-inositol-(1,2,3,4,5,6)-hexakisphosphate) to less-phosphorylated *myo*-inositol derivatives and inorganic phosphate. Phytases are important enzymes in the animal feed industry and are used to increase phosphate availability for monogastric animals (such as pigs and poultry) with sufficient endogenous phytase activity to fully degrade phytates in feed. Animal feeds are now often supplemented with phytase enzymes which remove the requirement to directly supplement phosphate, and also reduce phytic acid interference with the nutritional uptake of important minerals, proteins and amino acids.<sup>1</sup>

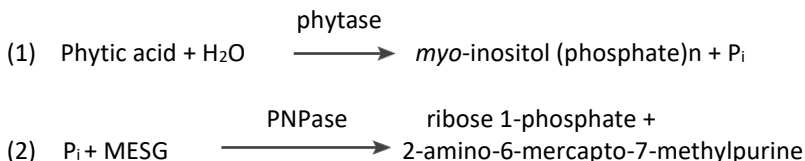
Phytase supplementation is also seen as a growing sector within the functional foods market,<sup>2</sup> as the role of phytic acid in humans is complex. High phytate intake has been shown to reduce the risk of osteoporosis<sup>3</sup> but is also linked to reduced absorption of dietary nutrients.<sup>4</sup>

Existing methodology for the detection of phytase activity is not ideal. Methods, such as the molybdenum based colourimetric assay, are cumbersome, requiring the creation of a phosphate standard curve and the use of toxic chemicals. Other methods such as the fluorometric based glucose detection method require costly reagents, expensive instruments and consumables and are time inefficient as a result of a lengthy procedure and the requirement to perform a standard curve with every experiment.

The Phytase assay (**K-PHYTASE**) method is a simple, quantitative method which can be used to measure phytase activity. Results are measured using a standard UV-VIS spectrophotometer and do not require the creation of a standard curve. This method has been used to measure phytase activity in cereal, fungal and bacterial phytases, and analysis of animal feed samples has shown good correlation with, and improved sensitivity over, ISO 30024 (Animal feeding stuffs - Determination of phytase activity).<sup>5</sup>

## PRINCIPLE:

The assay is based on the hydrolysis of phytic acid by phytase, thus releasing inorganic phosphate (Pi) (1). Upon termination of this reaction, the amount of phosphate is quantified in a second reaction (2). The phosphate quantification assay is based on the purine nucleoside phosphorylase (PNPase) mediated conversion of 2-amino-6-mercapto-7-methylpurine ribonucleoside (MESG) to 2-amino-6-mercapto-7-methylpurine and ribose-1-phosphate in the presence of free inorganic phosphate. This reaction causes a shift in the UV absorbance maximum of the MESG substrate from 330 nm to 360 nm. The rate of release of phosphate relates directly to the rate of hydrolysis of phytic acid by phytase and can be used to determine the activity of the phytase.



The assay principle is shown in more detail in Figure 1 (page 9).

## INTERFERENCE:

Interference caused by the sample matrix can be identified by performing recovery experiments, i.e. by adding a known amount of the supplied *Aspergillus niger* phytase standard to the sample in the test. Quantitative recovery of this standard would be expected.

## SAFETY:

The general safety measures that apply to all chemical substances should be adhered to. For more information regarding the safe usage and handling of this product please refer to the associated SDS that is available from the Megazyme® website ([www.megazyme.com](http://www.megazyme.com)).

## KITS:

Kits suitable for performing 100 assays in manual format are available from Neogen. The kits contain the full assay method plus:

- Bottle 1:** Phytic Acid, Lyophilised powder  
Store below -10°C. See individual label for expiry date.
- Bottle 2:** Stopping reagent (11 mL) plus sodium azide (0.02% w/v) as a preservative.  
Store at 4°C. See individual label for expiry date.
- Bottle 3:** Buffer (20 mL, pH 7.75) plus sodium azide (0.02% w/v) as a preservative.  
Store at 4°C. See individual label for expiry date.
- Bottle 4: (x2)** MESG, Lyophilised powder.  
Store below -10°C. See individual label for expiry date.
- Bottle 5:** PNPase suspension (1 mL).  
Store at 4°C. See individual label for expiry date.
- Bottle 6:** Phytase standard solution from *Aspergillus niger* (5 mL, see label for exact value) in glycerol solution containing BSA and sodium azide (0.02% w/v).  
Store below -10°C. See individual label for expiry date.

## PREPARATION OF REAGENT SOLUTIONS (SUPPLIED):

1. Dissolve the contents of **bottle 1** in 21 mL of distilled water. Use immediately or divide into appropriate volume aliquots and store in polypropylene tubes below -10°C.  
Stable for 2 years below -10°C.
2. Use the contents of **bottle 2** as supplied.
3. Use the contents of **bottle 3** as supplied.
4. Dissolve the contents of one of **bottle 4** in 5 mL of distilled water. This is **MESG solution**. Use immediately or divide into appropriate volume aliquots and store in polypropylene tubes below -10°C. Do not re-freeze once thawed. Do not dissolve the contents of the second bottle until required.  
Stable for 2 years below -10°C.
5. Use the contents of **bottle 5** as supplied. Before opening for the first time, swirl the bottle to remove any enzyme that may have settled on the rubber stopper. Subsequently, store the bottle in an upright position.
6. With a positive displacement pipette, dispense 0.5 mL of the contents of **bottle 6** into a 100 mL volumetric flask and accurately make to volume with Extraction/Dilution buffer (B). Mix thoroughly before use.

**NOTE:** The phytase standard solution is only assayed where there is some doubt about the accuracy of the spectrophotometer being used or where it is suspected that inhibition is being caused by substances in the sample.

## PREPARATION OF REAGENTS (NOT SUPPLIED):

### (A) 10% (w/v) Polysorbate 20

Weigh 10 g of polysorbate 20 (e.g. Tween®20) and make up to 100 mL with distilled water. Mix thoroughly before use.

Stable for > 6 months at room temperature.

### (B) Extraction/Dilution Buffer

(Sodium acetate buffer, 0.25 M, pH 5.5 containing 0.01% polysorbate 20)

Add 15 g of glacial acetic acid (1.05 g/mL) to 800 mL of distilled water. Adjust the pH of this solution to 5.5 by the addition of 5 M (20 g/100 mL) sodium hydroxide solution. Add 1 mL of 10% polysorbate 20 (A). Adjust the volume to 1 L with distilled water.

Stable for > 2 weeks at room temperature.

## EQUIPMENT (RECOMMENDED):

1. Glass test tubes (12 mL capacity)
2. Disposable polypropylene tubes (13 mL capacity)
3. Disposable plastic cuvettes (1 cm light path, 1.5 mL).
4. Micro-pipettors, e.g. Gilson® Pipetman® (20 µL and 100 µL).
5. Positive displacement pipettor, e.g. Eppendorf® Multipipette®.
  - with 5.0 mL Combitip®.
  - 
  - with 25 mL Combitip®.
6. Analytical balance.
7. Spectrophotometer set at 360 nm.
8. Vortex mixer.
9. Thermostated water bath set at 40°C.
10. Stop clock.
11. Bench centrifuge or Whatman GF/A glass fibre filter paper circles.

## CONTROLS AND PRECAUTIONS:

A blank should be prepared for each sample. To obtain this value, add 0.1 mL of Stopping Reagent to 0.2 mL of phytic acid solution and then add 0.2 mL of diluted enzyme preparation. A single sample blank determination is sufficient for each sample. If the value  $A_{2-A_1}$  for the sample blank exceeds 0.5, then the sample should be desalted to remove free phosphate following the phosphate removal procedure (Example C described on page 7) and should then be re-analysed.

## ASSAY PROCEDURE

### STEP 1: Enzyme/substrate reaction

1. Dispense 0.2 mL aliquots of Phytic acid (bottle 1) into test tubes and pre-incubate the tubes and contents at 40°C for 5 min.
2. Pre-incubate suitably diluted enzyme at 40°C for 5 min in a separate vessel. Sample preparation examples are supplied on page 7.
3. To each tube containing Phytic acid solution (0.2 mL), add 0.2 mL of the pre-incubated enzyme extract directly to the bottom of the tube. Mix thoroughly and incubate the mixture at 40°C for exactly 10 min (from time of addition).
4. At the end of the 10 min incubation period, add exactly 0.1 mL of Stopping Reagent and mix the contents vigorously. Take a 0.1 mL aliquot of this reaction mixture into Step 2 for phosphate detection.

**NOTE:** The volume of reaction mixture taken for analysis in Step 2 can be increased to 0.4 mL to increase the sensitivity of the assay. The volume of distilled water in the cuvette should be reduced accordingly. See 'Troubleshooting' on page 8.

## STEP 2: Phosphate detection

**Wavelength:** 360 nm  
**Cuvette:** 1 cm light path (glass or plastic)  
**Temperature:** 22°C  
**Final volume:** 1.01 mL  
**Sample solution:** 0.1-10 µg of phosphate per cuvette  
(in 0.1-0.4 mL sample volume)

**Read against air** (without a cuvette in the light path) or against water

Pipette into cuvettes	Sample Blank	Sample
distilled water (at ~ 22°C)	0.60 mL	0.60 mL
sample from Step 1	-	0.10 mL
sample blank from Step 1	0.10 mL	-
<b>bottle 3</b> (buffer)	0.20 mL	0.20 mL
<b>MESG solution</b>	0.10 mL	0.10 mL
Mix*, read the absorbances of the solutions ( $A_1$ ) after approx. 3 min and start the reaction by addition of:		
<b>bottle 5</b> (PNPase)	0.01 mL	0.01 mL
Mix* and read the absorbance of the solutions ( $A_2$ ) at the end of the reaction (~ 20 min).		

\* for example with a plastic spatula or by gentle inversion after sealing the cuvette with a cuvette cap or Parafilm®.

## CALCULATION:

Determine the absorbance difference ( $A_2 - A_1$ ) for both blank and sample. Subtract the absorbance difference of the sample blank from the absorbance difference of the sample, thereby obtaining  $\Delta A_{\text{phytase}}$ . In order to achieve sufficiently accurate results the value of  $\Delta A_{\text{phytase}}$  should as a rule be at least 0.1 absorbance units, and not more than 0.8 absorbance units. See 'Troubleshooting' on page 8.

**One unit** of Phytase activity is the amount of enzyme that generates 1.0  $\mu\text{mol}$  of phosphate per min, at pH 5.5 at 40°C. The activity of phytase can be calculated as follows:

$$c = \frac{V_1 \times V_2 \times D}{\epsilon_{\mu\text{M}} \times d \times v_1 \times v_2 \times 1000 \times t} \times \Delta A_{\text{phytase}} \quad [\text{U/mL}]$$

### where:

- $V_1$  = final volume from Step 1 [mL]
- $V_2$  = final volume from Step 2 [mL]
- $D$  = dilution factor (e.g. if sample is diluted 10-fold,  $D = 10$ )
- $\epsilon_{\mu\text{M}}$  = micromolar extinction coefficient of MESG at 360 nm  
=  $0.0084 [\text{l} \times \mu\text{mol}^{-1} \times \text{cm}^{-1}]$
- $d$  = light path [cm]
- $v_1$  = sample volume from Step 1 [mL]
- $v_2$  = sample volume from Step 2 [mL]
- 1000 = conversion from L to mL
- $t$  = reaction time from Step 1 [min]

### It follows for phytase:

$$c_{\text{phytase}} = \frac{0.5 \times 1.01 \times D}{0.0084 \times 1 \times 0.2 \times 0.1 \times 1000 \times 10} \times \Delta A_{\text{phytase}} \quad [\text{U/mL}]$$

When analysing solid and semi-solid samples which are weighed out for sample preparation, the content (U/g) is calculated from the amount weighed as follows:

$$= \frac{c_{\text{phytase}} [\text{U/mL sample solution}]}{\text{weight}_{\text{sample}} [\text{mg/mL sample solution}]} \times 1,000,000 [\text{U/Kg}]$$

### where:

- 1,000,000 = Conversion from U/mg to U/Kg

**NOTE:** These calculations can be simplified by using the Megazyme **Mega-Calc**<sup>™</sup>, downloadable from where the product appears on the Megazyme website ([www.megazyme.com](http://www.megazyme.com)).

## **SAMPLE PREPARATION EXAMPLES:**

### **A. Determination of phytase in industrial enzyme preparations:**

1. **Liquid enzyme preparations:** Add 1.0 mL of liquid enzyme preparation to 49 mL of the Extraction/Dilution Buffer (B) using a positive displacement dispenser (these solutions can be very viscous) and mix thoroughly. Further dilute in Extraction/Dilution Buffer (B) if required until a dilution suitable for assay is achieved. For calculation purposes a dilution factor (D) of 50 is used for the initial extraction, and any further dilution of the extract should be taken into account by multiplication.
2. **Powder enzyme preparations:** Add 1.0 g of powder enzyme sample to 50 mL of the Extraction/Dilution Buffer (B) and gently stir the slurry over a period of approx. 15 min or until the sample is completely dispersed or dissolved. Clarify this solution by centrifugation (1,000 *g*, 10 min) or by filtration through Whatman No. 1 (9 cm) filter circles. Further dilute in Extraction/Dilution Buffer (B) if required until a dilution suitable for assay is achieved. For calculation purposes a solid sample concentration of 20 mg/mL is used for  $\text{weight}_{\text{sample}}$  [mg/mL sample solution]. Take any further dilution of the extract into account by adjusting the dilution factor (D).

### **B. Determination of phytase in animal feeding stuffs:**

Mill the feed sample to pass a 0.5 mm screen. Weigh 1.0 g of milled sample into a 13 mL polypropylene tube, record the exact weight, and add 5 mL of the Extraction/Dilution Buffer (B). Mix thoroughly by vortex and leave at ambient temperature for 15 min with occasional mixing. Clarify this solution by centrifugation (3,000 *g*, 10 min) or by filtration through Whatman No. 1 (9 cm) filter circles. Where the sample contains high levels of free phosphate (> 60 µg phosphate per mL or gram of appropriately diluted sample) it should be taken through the phosphate removal procedure (**Sample Preparation Example C or D**). For calculation purposes a solid sample concentration of 200 mg/mL is used as  $\text{weight}_{\text{sample}}$ . Take any further dilution of the extract into account by adjusting the dilution factor (D).

### **C. Removal of free phosphate (using a PD-10 column):**

Prepare a PD-10 desalting column (columns containing Sephadex G-25 Medium are commercially available from GE Healthcare Cat. no GE17-0851-01) by washing with ~ 20 mL of Extraction/ Dilution Buffer (B). Apply 2 mL of sample (from **Sample Preparation Example B**) to the column and allow to percolate through until the top of the column no longer contains any liquid. Wash with 1 mL of Extraction/Dilution Buffer (B). Collect the total eluent (3 mL) and discard. Apply a further 3 mL of Extraction/Dilution Buffer (B) to the column and collect the eluent (3 mL). This is the sample solution ready for use in the enzyme/substrate reaction. For calculation purposes this step should be treated as a 1.5-fold dilution of the extract and the dilution factor (D) should be adjusted to include this.



#### D. Removal of free phosphate (using ion exchange resin):

Weigh 0.1 g of Amberlite® FPA53 (OH<sup>-</sup>) resin (Megazyme cat. no. **G-AMBOH, 700004248**) and 0.1 g of Ambersep® 200 (H<sup>+</sup>) resin (Megazyme cat. no. **G-AMBH, 700004247**) into a 13 mL polypropylene tube. Dispense 2 mL of sample (from **Sample Preparation Example B**) into the tube. Cap the tube and mix thoroughly by vortexing for 30 sec. Clarify this solution by centrifugation (3,000 *g*, 10 min) or by filtration through Whatman No. 1 (9 cm) filter circles. This is the sample solution ready for use in the enzyme/substrate reaction.

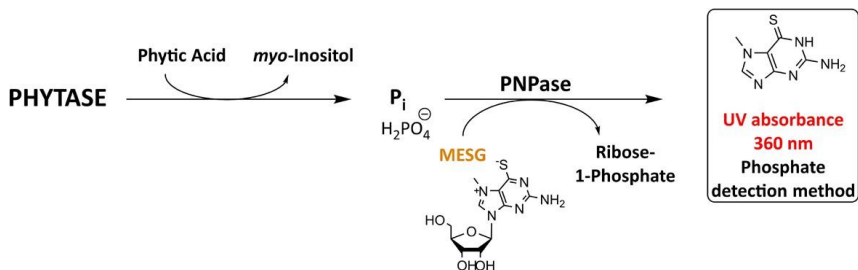
#### TROUBLESHOOTING:

Recommendations on how to adjust the assay if absorbance values are not satisfactory.

Issue	Recommendation
Sample blank $A_2 - A_1$ > 0.5	After sample extraction remove free phosphate using sample preparation example C on page 7.
$\Delta A_{\text{phytase}}$ > 0.8	Appropriately dilute the sample with Extraction/ Dilution Buffer (B) and repeat the assay from Step 1. Adjust the dilution factor (D) in the calculation accordingly.
$\Delta A_{\text{phytase}}$ < 0.1	<ul style="list-style-type: none"><li>- Dilute the sample less strongly if possible. Adjust the dilution factor (D) in the calculation accordingly.</li><li>- Increase the time of incubation in Step 1: Enzyme/ substrate reaction. Adjust the time of incubation (t) in the calculation accordingly.</li><li>- Increase the volume of sample used in Step 2: Phosphate determination to 0.4 mL. Reduce the volume of distilled water in the test proportionately. Adjust the value for <math>v_2</math> in the calculation accordingly.</li></ul>

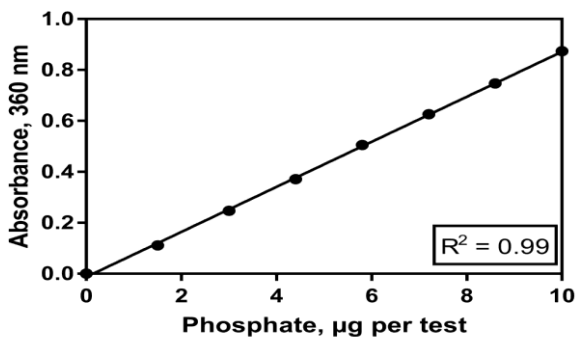
## APPENDIX:

### A. Assay Principle - Phytase detection

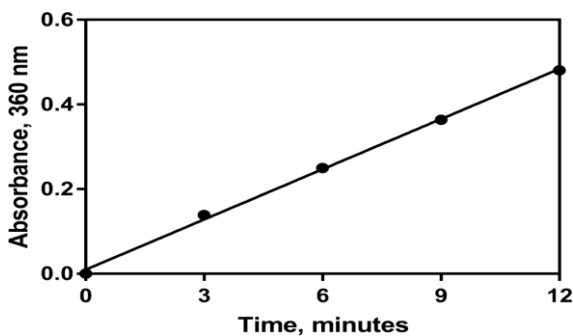


**Figure 1.** Theoretical basis of the phytase assay.

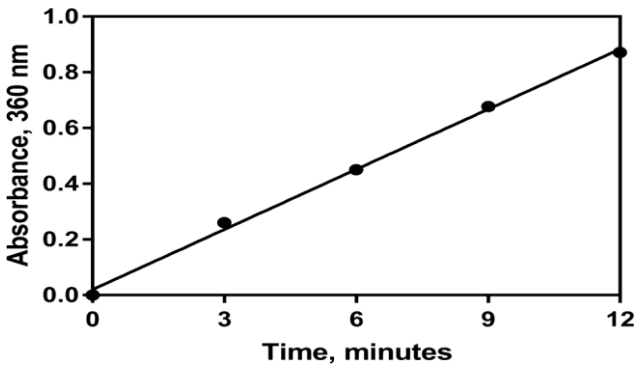
### B. Linearity of assay



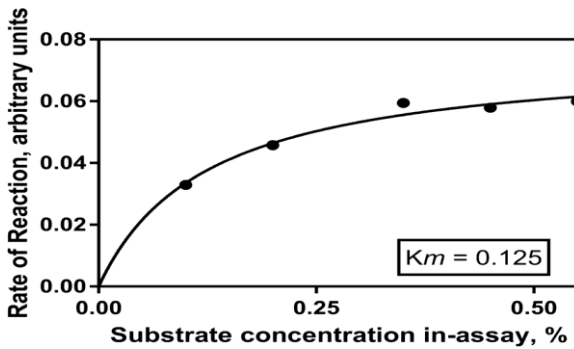
**Figure 2.** Linearity of the phosphate detection step.



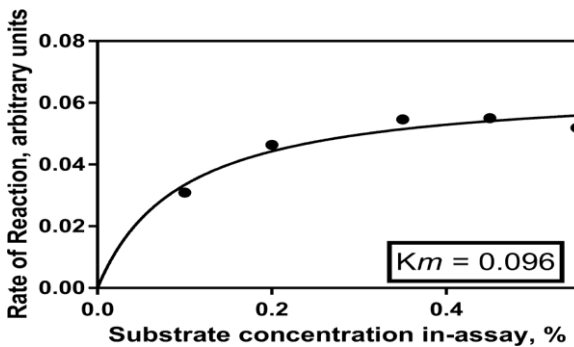
**Figure 3.** Linearity of Step 1: enzyme/substrate reaction over time for highly purified phytase from *Aspergillus niger*, at pH 5.5 and 40°C.



**Figure 4.** Linearity of Step 1: enzyme/substrate reaction over time for a commercial phytase from *Aspergillus oryzae*, at pH 5.5 and 40°C.



**Figure 5.** Michaelis-menten kinetics for a highly purified phytase from *Aspergillus niger*, with varying substrate concentrations in Step 1: enzyme/substrate reaction, at pH 5.5 and 40°C.



**Figure 6.** Michaelis-menten kinetics for a commercial phytase from *Aspergillus oryzae*, with varying substrate concentrations in Step 1: enzyme/substrate reaction, at pH 5.5 and 40°C.

### C. Repeatability

	Absorbance 360 nm, $\Delta A_{\text{phytase}}$	
	2.8 mU/test	22.4 mU/test
Extract 1	0.05	0.354
Extract 2	0.052	0.397
Extract 3	0.049	0.371
Extract 4	0.052	0.355
Extract 5	0.051	0.396
Extract 6	0.048	0.352
Extract 7	0.049	0.383
Extract 8	0.042	0.359
n (extractions)	8	8
MEAN	0.049	0.370875
ST. DEV	0.00	0.02
RSDr (%)	6.57	5.09

**Table 1.** The repeatability of the assay for liquid enzyme preparations was determined by analysis of 1 highly purified sample of phytase at 2 concentrations (prepared as described in Example A - liquid preparations on page 7) over a period of 3 days, with 8 separate extractions of enzyme analysed in duplicate as per the standard procedure.

	Absorbance 360 nm				U/Kg
	Sample blank ( $A_2-A_1$ )	Sample ( $A_2-A_1$ )		$\Delta A_{\text{phytase}}$	
Extract 1	0.243	0.633	0.638	0.393	886.00
Extract 2	0.285	0.634	0.631	0.348	784.55
Extract 3	0.280	0.619	0.638	0.349	786.81
Extract 4	0.283	0.613	0.617	0.3325	749.61
Extract 5	0.296	0.688	0.683	0.39	879.24
Extract 6	0.278	0.61	0.617	0.3355	756.37
Extract 7	0.242	0.632	0.637	0.3925	884.88
Extract 8	0.251	0.601	0.61	0.3545	799.21
n (extractions)					8
MEAN					815.83
ST. DEV					58.22
RSDr (%)					7.14

**Table 2.** The repeatability of the assay for feed samples was determined by analysis of one commercially available sample of chicken feed (prepared as described in Examples B and C on page 7) over a period of 3 days, with 8 separate extractions of enzyme analysed in duplicate as per the standard procedure.

	Phytase Activity, U/g	
	ISO 30024	K-PHYTASE
<b>Sample 1</b>	25,000	24,097
<b>Sample 2</b>	5,000	5,386

**Table 3.** Two commercially available industrial phytase preparations were analysed using **K-PHYTASE** and results were compared to the manufacturer's product specifications (measured using ISO 30024).

	Phytase Activity, U/g	
	ISO 30024	K-PHYTASE
<b>Feed sample 1</b>	715.5	836.4
<b>Feed sample 2</b>	1840.8	1734.8
<b>Feed sample 3</b>	445.4	364.1

**Table 4.** Three commercially available animal feed samples were analysed using ISO 30024:2009(E) and compared to results achieved using **K-PHYTASE** (sample preparation examples B and C on Page 7).

## REFERENCES:

1. Garcia-Esteva, R. M., Guerra-Hernández, E. & Garcia-Villanova, B. (1999). Phytic acid content in milled cereal products and breads. *Food Res. Inter.*, **32**, 217-221.
2. Greiner, R. & Konietzny, U. (2006). Phytase for food application. *Food Technology and Biotechnology*, **44**, 125-140.
3. López-González, A. A., Grases, F., Roca, P., Mari, B., Vicente- Herrero, M. T. & Costa-Bauzá, A. (2008). Phytate (myo-inositol hexaphosphate) and risk factors for osteoporosis. *J. Med. Food*, **11**, 747-752.
4. Lopez, H. W., Leenhardt, F., Coudray, C. & Remesy, C. (2002). Minerals and phytic acid interactions: is it a real problem for human nutrition? *Inter. J. Food Sci. Technol.*, **37**, 727-739.
5. International Organization for Standardization. (2009). Animal feeding stuffs - Determination of phytase activity (ISO Standard No. 30024).



---

Contact us for more information: [neogen.com/contact](https://neogen.com/contact)

---

#### **Without guarantee**

The information contained in this assay protocol is, to the best of our knowledge, true and accurate, but since the conditions of use are beyond our control, no warranty is given or is implied in respect of any recommendation or suggestions which may be made or that any use will not infringe any patents.

##### **User Responsibility**

- Users are responsible for familiarizing themselves with product instructions and information. Visit our website at [neogen.com](https://neogen.com), or contact your local Neogen® representative or authorized distributor for more information.
- When selecting a test method, it is important to recognize that external factors such as sampling methods, testing protocols, sample preparation, handling, laboratory technique and the sample itself may influence results.
- It is the user's responsibility in selecting any test method or product to evaluate a sufficient number of samples with the appropriate matrices and challenges to satisfy the user that the chosen test method meets the user's criteria.
- It is also the user's responsibility to determine that any test methods and results meet its customers' and suppliers' requirements.
- As with any test method, results obtained from use of any Neogen product do not constitute a guarantee of the quality of the matrices or processes tested.

Terms and Conditions Neogen's full terms and conditions are available [online](#).