

QUICK START GUIDE

KURZANLEITUNG

GUÍA RÁPIDA

MODE D'EMPLOI RAPIDE

ISTRUZIONI BREVI

GUIA RÁPIDO

BEKNOPTE HANDLEIDING

EN

DE

ES

FR

IT

PT

NL

memmert

HPPeco | IPPeco | IPPecoplus

IPP | IPPplus

UN | UF | UNplus | UFplus

IN | IF | INplus | IFplus

UNm | UFm | UNmplus | UFmplus

INm | IFm | INmplus | IFmplus | IFbw



www.memmert.com

D39872 - 09/2022

QUICK START GUIDE - ENGLISH

This guide provides a brief overview of the operation of Memmert appliances and the safety regulations that you must observe. These instructions contain only basic information that is relevant to your appliance for initial information. For detailed descriptions of individual functions, please refer to the operating manual of your appliance. Information on the type of appliance, size and power data can be obtained directly from the type plate on the appliance. Detailed instructions for your device can be found in PDF format on the supplied USB stick (only devices with TwinDISPLAY) or on the Internet at:

www.memmert.com/user-manuals

Always read the complete operating instructions before working with the device!



Scan for detailed
informations!

SAFETY INSTRUCTIONS



⚠ WARNING

After removing covers, live parts may be exposed. You may receive an electric shock if you touch these parts. Disconnect the mains plug before removing any covers. Only electrical technicians may work on the electrical equipment of the appliances.



⚠ WARNING

When loading the appliance with an unsuitable load, poisonous or explosive vapours or gases may be produced. This could cause the appliance to explode, and persons could be severely injured or poisoned. The appliance may only be loaded with materials/test objects which do not form any toxic or explosive vapours when heated up.



⚠ WARNING

In case of appliances of a certain size, you can get accidentally locked in, which is life-threatening. Do not climb into the appliance.



⚠ WARNING

If the door is open while the appliance is in operation, the appliance may overheat and pose a fire hazard. Do not leave the door open during operation.

Additional safety instructions for the models UNx UFx INx IFx



⚠ WARNING

Depending on operation, the surfaces in the working chamber and the chamber load may still be very hot after the appliance is switched off. Touching these surfaces can cause burns. Wear heat-resistant protective gloves or wait until the appliance cools down.

GENERAL INSTRUCTIONS FOR USE

Requirements of the operating personnel

The appliance may only be operated and maintained by persons who are of legal age and have been instructed accordingly. Personnel who are to be trained, instructed or who are undergoing general training may only work with the appliance under the continuous supervision of an experienced person. Repairs may only be performed by qualified electricians. The regulations in the separate service manual must be observed.

Changes and alterations

No unauthorised changes or alterations may be made to the appliance. No parts may be added or inserted which have not been approved by the manufacturer. Unauthorised modifications or changes result in the CE declaration of conformity losing its validity and the appliance must no longer be operated. The manufacturer is not liable for any damage, danger or injuries that result from unauthorised changes or alterations, or from non-observance of the regulations in this manual.

GENERAL INSTRUCTIONS FOR USE

Behaviour in case of malfunctions and irregularities

The appliance may only be used in a flawless condition. If you as the operator notice irregularities, malfunctions or damage, immediately take the appliance out of service and inform your superior.

Switching off the appliance in an emergency

Push the On/Off switch on the control panel and disconnect power plug. This disconnects the appliance from the power supply at all poles.



Applied directives and standards

INx IFx UNx UFx IPPx HPPx

► Directive 2014/30/EU amended

Directive of the council for harmonisation of the laws of the member states on electromagnetic compatibility. Standards complied with:

DIN EN 61326-1:2013-07 **EN 61326-1:2013**

► Directive 2014/35/EC amended

Directive of the council on harmonisation of the laws of member states relating to electrical equipment designed for use within certain voltage limits. Standards complied with:

DIN EN 61010-1:2011-07 **EN 61010-1:2010**

DIN EN 61010-2-010:2015-05 **EN 61010-2-010:2014**

UNxxm UFxxm UNxxmpls UFxxmpls INxxm IFxxm

► Directive 93/42/EEC (including annex and revisions)

Class I, According to directive 93/42/EEC, annex IX Rule 1 / Rule 12

INxxmpls IFxxmpls

► Directive 93/42/EEC (including annex and revisions)

Class I, According to directive 93/42/EEC, annex IX Rule 1 / Rule 2 / Rule 12

Intended use

UNxx - UFx
UNxxpls - UFxpls
INxx - IFxx
INxxpls - IFxxpls

This appliance is exclusively intended for heating up non-explosive substances and objects. Any other use is improper and may result in hazards and damage.

UNxxm, UFxxm
UNxxmpls
UFxxmpls
INxxm, IFxxm

The appliance may be used for heating fango, silicate and APS packs for physical therapy and keeping them warm.

INxxmpls
IFxxmpls

The appliance may be used for temperature control of rinsing and infusion solutions and contrast agents.

IFxxbw

The appliance is used to heat non-sterile cloths and covers.

IPPxx
IPPxxeco

Peltier-cooled incubators IPP, IPPeco are intended for the storage of substances and samples, for determination of life expectancy as well as for cultivation and incubation in a temperature range of 0 to 70 °C.

HPPxxeco
IPPxxpls
IPPxxeco pls

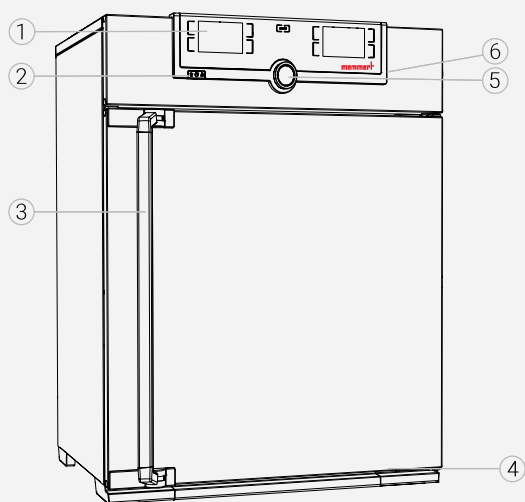
Constant climate chambers HPPeco and cooled incubators IPPpls, IPPeco pls may be used exclusively for temperature and climate testing of materials and substances in the context of the procedures and specifications described in this manual.

Improper use

Any other use is improper and may result in hazards and damage. The appliance is not explosion-proof (does not comply with the German occupational health and safety regulation VBG 24). The appliance may only be loaded with materials and substances which cannot form any toxic or explosive vapours at the set temperature and which cannot explode, burst or ignite. The appliance may not be used for the drying, evaporation and burning-in of paints or similar materials, the solvents of which could form an explosive mixture when combined with air. If there is any doubt as to the composition of materials, they must not be loaded into the appliance. Potentially explosive gas-air mixtures must not form, neither in the working chamber nor in the direct vicinity of the appliance.

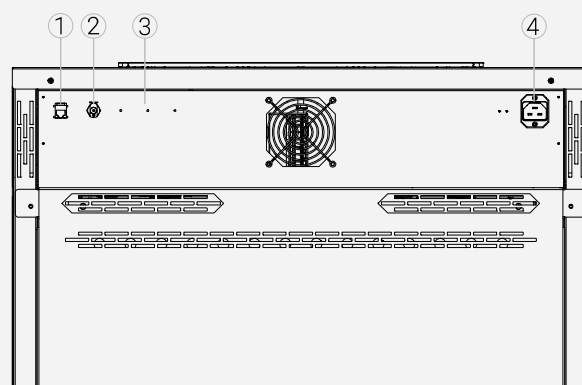
CONSTRUCTION AND DESCRIPTION

Appliance overview



- | | |
|------------------|--------------------------------------|
| 1 ControlCOCKPIT | 4 Nameplate (Door frame inside) |
| 2 On/Off switch | 5 Turn control with confirmation key |
| 3 Door handle | 6 USB interface (TwinDisplay) |

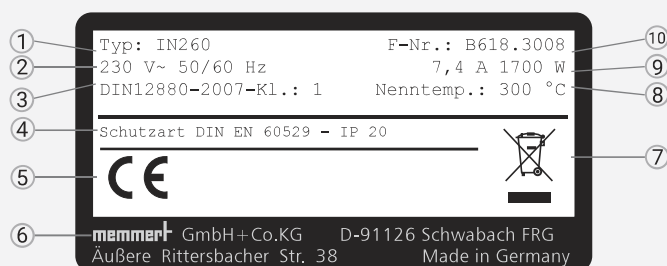
Connections and interfaces



- | | |
|--|--------------------|
| 1 Ethernet interface | 4 Power connection |
| 2 Water connection (only HPP) | |
| 3 Optional interfaces (e.g. option H5) | |

Designation (nameplate)

- | | |
|---------------------|------------------------------|
| 1 Type designation | 6 Address of manufacturer |
| 2 Operating voltage | 7 Disposal note |
| 3 Applied standard | 8 Temperature range |
| 4 Protection type | 9 Connection / power ratings |
| 5 CE conformity | 10 Appliance number |



DELIVERY, TRANSPORT AND SETTING UP



⚠ WARNING

Condensation might cause a short circuit. After transport or storage at high humidity conditions, the appliance shall be stored unpacked at normal conditions for at least 24 hours. During this period of time the appliance shall not be connected to the power supply.



⚠ CAUTION

The appliance could fall over and seriously injure you. Never tilt the appliance and transport it in upright position and without load only (except for standard accessories such as steel grids or shelves). Appliances with castors always have to be moved by two people.



⚠ CAUTION

You could be injured due to the weight of the device if you try to lift it alone. Observe the required number of people to carry equipment. Larger equipment must not be carried, but only transported with a lift truck or forklift.



⚠ CAUTION

You may get your hands or feet squashed when transporting and installing the appliance. Wear protective gloves and safety boots. When grasping the bottom of the appliance, grasp it only on the sides.



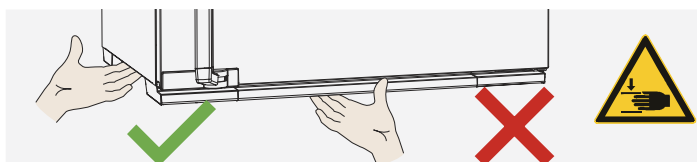
≤ 75 L



≤ 260 L



> 260 L



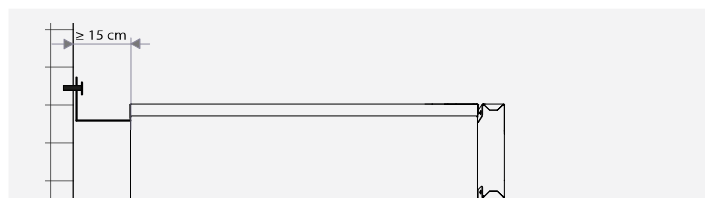
Setting up



⚠ WARNING

the appliance can fall over to the front and injure you or other people. Always attach the appliance to a wall with the tilt protection.

The distance between the wall and the rear of the appliance must be at least 15 cm. The clearance from the ceiling must not be less than 20 cm and the side clearance from walls or nearby appliances must not be less than 5 cm. Sufficient air circulation in the vicinity of the appliance must be guaranteed at all times.



Putting into operation

NOTICE

The first time the appliance is operated, it must not be left unattended until it has reached the steady state.

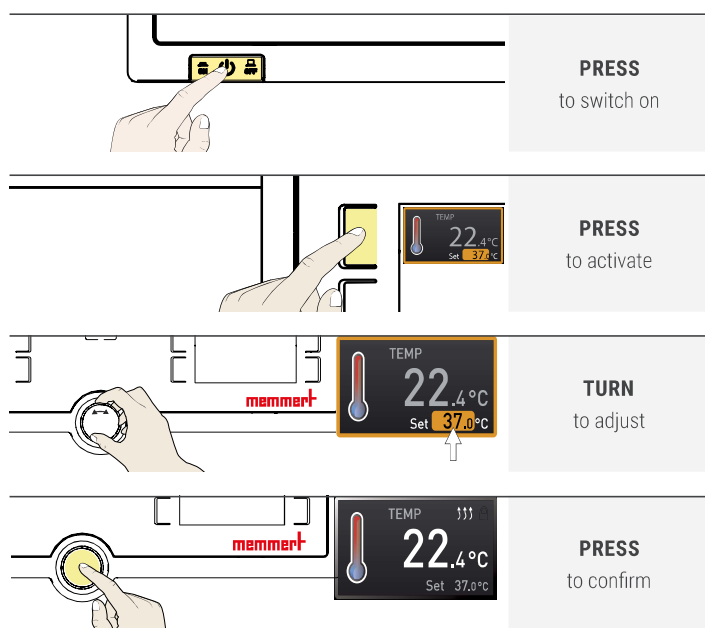
Observe the country-specific regulations when making connections. Observe the connection and power ratings (see nameplate and Technical data). Make sure to establish a safe PE conductor connection.

Lay the power cable so that

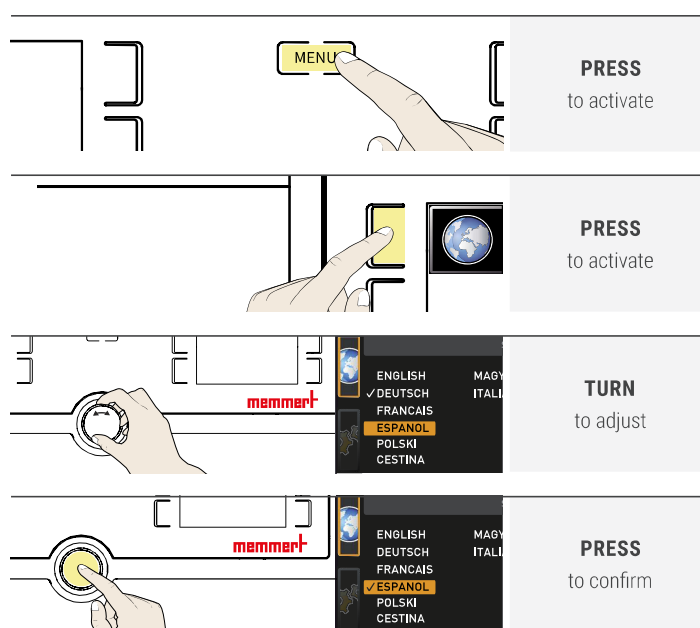
- ▶ no one can trip over it;
- ▶ it does not come into contact with any hot parts;
- ▶ it is always accessible and within reach so it can be disconnected quickly in the event of failure or emergencies.

SWITCHING ON AND OPERATION

Basic operation - Setting the temperature



Menu control - Language selection

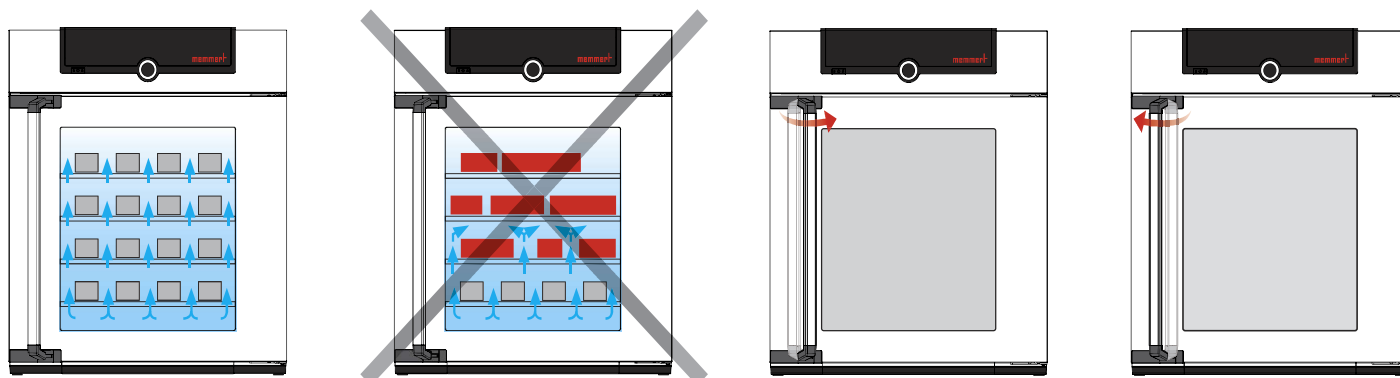


DEVICE LOADING

Do not place any load on the floor, on the side walls or under the ceiling of the interior. In case of unfavourable loading (e.g. too dense) the set temperature may be exceeded or only reached after a longer period of time.

To open the door, pull the handle to the side and open the door completely.

To close the door, close the door and push the handle to the side.



DISPOSAL

This product is subject to the Directive 2012/19/EC on Waste Electrical and Electronic Equipment (WEEE) of the European Parliament and of the Council. This appliance has been brought to market after August 13th, 2005 in countries which have already integrated this directive into their national laws. It may not be disposed of in normal household waste. For disposal, please contact your dealer or the manufacturer. Any appliances that are infected, infectious or contaminated with materials hazardous to health are excluded from return. Please also observe all other regulations applicable in this context. Before disposing of the appliance, please render the door locking mechanism unusable, for example, to prevent playing children from being locked inside the appliance.



There is a lithium battery in the ControlCOCKPIT of the appliance. Remove it and dispose of it in accordance with the regulations in your country.

